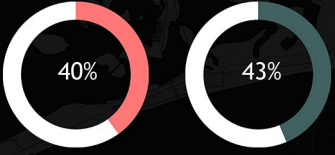


THE REALITY

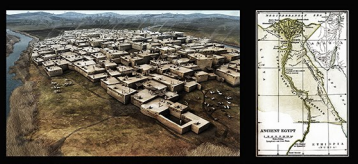


40% of Nassau County residents were heavily affected by Hurricane Sandy

43% of Nassau County homes are located near the water

EVERYONE LIVING NEAR THE WATER IS IN DANGER!

OUR INSPIRATION FOR A STRATEGY TO COEXIST WITH THE RISING WATER CAME FROM ANCIENT ARCHITECTURE



- THE CATALHOYUK IS CONSIDERED THE FIRST FORM OF HUMAN CITY, WITH THE ENTRANCE FOR EACH HOUSE FROM THE ROOFTOP, ELIMINATING THE NEED FOR GROUND STREET.
- THE ANCIENT EGYPTIAN ALSO MADE GREAT USE OF THE NILE FOR TRANSPORTING HEAVY BUILDING MATERIAL.

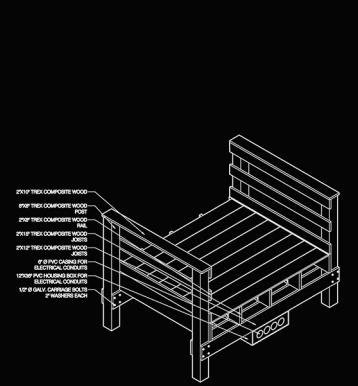
LONG ISLAND'S DYING WATER'S EDGE



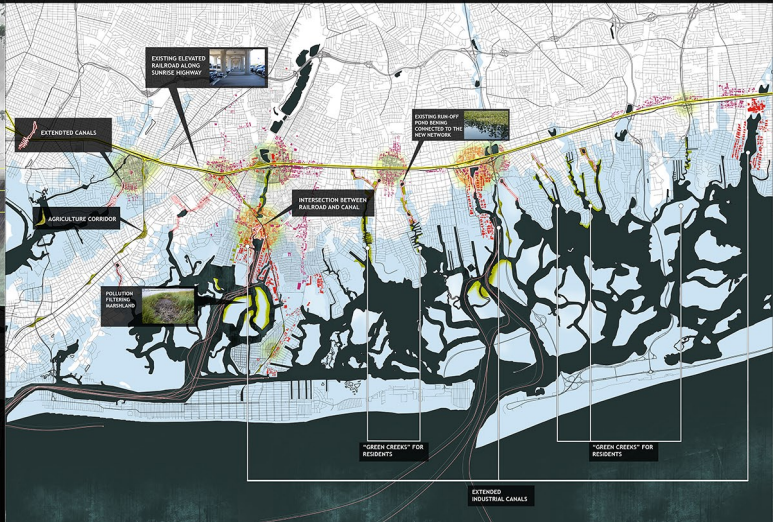
THE TROPICAL STORMS THAT STRIKE AREAL ARE THE MOST DANGEROUS AND COSTLY TO THE ECONOMY AND ENVIRONMENT.

THE EQUATORIAL WINDS ARE THE MOST DANGEROUS AND COSTLY TO THE ECONOMY AND ENVIRONMENT.

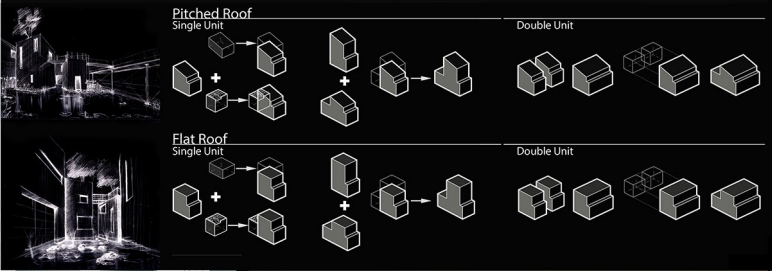
THE EQUATORIAL WINDS ARE THE MOST DANGEROUS AND COSTLY TO THE ECONOMY AND ENVIRONMENT.



THE GREEN SPINE MASTER PLAN



THE SINGLE FAMILY BLOCK



RE-ORGANIZING THE BLOCK

