


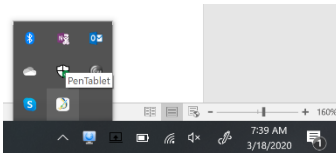
Low End UGEE M708

Tablet Installation

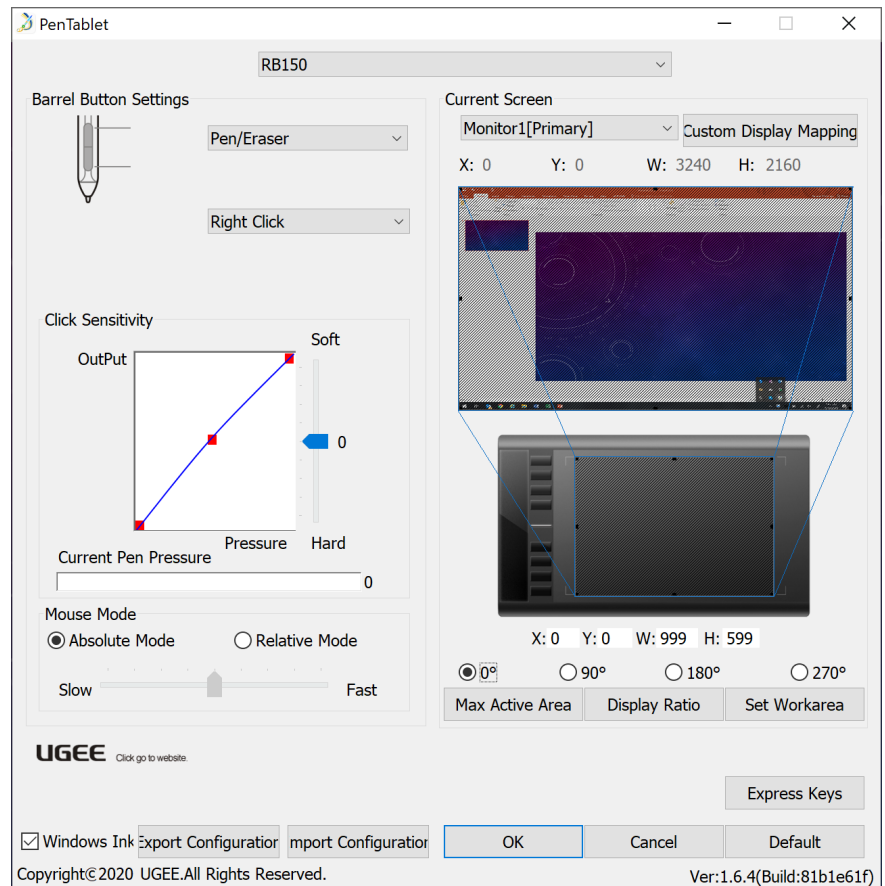
The Pen Tablet allows you move your mouse and annotate in Microsoft Word and PowerPoint you can use the Pen and Tablet to annotate on screen or blank slide.

1. Go to <http://ugee.net/support/index.html> , Click on Download, Download the latest driver for your operating system (Windows or Mac).
2. Extract the zip / compressed file contents before running the installation. Run the installation
3. After a successful installation, the driver's icon  will appear in your systems tray and on the desktop. A systems reboot will be required after the installation is complete.
4. Connect the M708 tablet to your computer with the included USB cable. Your computer should now see the tablet and allow you to move the mouse round the screen.
5. To review and customize keys and function of the tablet. Click on the Pen Tablet icon in system tray.

Windows System tray



Pen Tablet Customization APP



Express Keys

