

**Graduating Student Survey**  
**Academic Year 2015-2016**

Office of Institutional Research & Assessment

December 2017

# Table of Contents

I.	<b>Report Highlights</b> .....	1
II.	<b>Employment</b> .....	2
	Table 1: Overall Employment by Survey Year.....	3
	Table 2: Employment Details by Location .....	4
	Table 3: Employers of NYIT Graduates .....	5
III.	<b>Overall Experience and NYIT Recommendation</b> .....	13
	Figure 1: Overall Experience at NYIT .....	14
	Figure 2: “I would recommend NYIT to a friend” .....	15
IV.	<b>Subsequent Plans</b> .....	16
	Table 4: Future Educational Plans and College Choice.....	17
	Table 5: Colleges Graduates Would Most Like to Attend After NYIT.....	18
V.	<b>Student Satisfaction Ratings</b> .....	20
	Figures 3-5: 3-year Comparisons of Student Satisfaction Scores by Location .....	21
	Figures 6-7: “How has your NYIT education improved you” by Location .....	24
VI.	<b>Demographics</b> .....	26
	Table 6: Demographics .....	27

## I. 2015-2016 NYIT Graduating Student Survey Highlights

- ❖ The mean overall ratings of students' experience at NYIT by campus (where 1 = poor and 5 = excellent) are 3.83 for Manhattan and 3.78 for Old Westbury. See page 13 for the three-year rating trend.
- ❖ 95.3% of NYIT graduates entering the job market are employed within a year of graduation, with some pursuing an additional degree or course of study. Trends in overall employment rates and other employment details can be found on pages 3-4.
- ❖ Approximately 49% of graduates from both the Old Westbury and Manhattan campuses reported that they participated in experiential learning (defined as internships, externships, fieldwork, practicums, student teaching, and/or clerkships) during their time at NYIT.

### Procedure

Beginning in spring 2017, all graduates for the academic year 2015-2016 (August 2015 through July 2016) were contacted by email and invited to participate in the online survey. The email included a greeting from the Institutional Research and Assessment department as well as the link to the online survey. The initial email list consisted of 2,743 undergraduate and graduate students; of that number, 2,492 were successfully delivered. Thirteen follow-up emails were sent over a seven-week period. This effort yielded a total of 784 responses, for a 31.5% overall response rate on the successful deliveries. An analysis of the survey sample shows that for most locations and schools, respondents are accurately represented relative to their populations; however, the School of Health Professions and School of Management are slightly underrepresented, and the School of Engineering and Computing Sciences is somewhat overrepresented in the GSS sample. All global campus graduates were invited to participate, but too few graduates responded to report meaningful results.

## **II. EMPLOYMENT AND CAREER SERVICES**

**Table 1 : Overall Employment by Survey Year**

		Grads through Aug 11/July 12 (n=196)	Grads through Aug 12/July 13 (n=412)	Grads through Aug 13/July14 (n=317)	Grads through Aug 14/July15 (n=377)	Grads through Aug 15/July16 (n=681)
Employment rate*	Employed	92.3%	94.9%	93.4%	96.3%	95.3%
	Not employed; seeking employment	7.7%	5.1%	6.6%	3.7%	4.7%
	Total	100.0%	100.0%	100.0%	100.0%	100.0%

\*Employment rate is the percentage of NYIT graduates entering the job market who are employed within a year of graduation; some are also pursuing an additional degree or course of study.

**Table 2 : Employment Details by Location**

		Manhattan (n=216)	Old Westbury (n=388)
When did you obtain your current position?	Prior to time at NYIT	8.3%	12.6%
	During NYIT or 3 months after graduation	45.4%	57.8%
	4-6 months after graduation	21.8%	20.6%
	7-12 months after graduation	16.2%	5.9%
	More than a year after graduation	8.3%	3.1%
Total		100.0%	100.0%

		Manhattan (n=303)	Old Westbury (n=492)
How did you obtain your position? [NOTE: Students could select more than one.]	NYIT professors	2.0%	1.2%
	Personal (friends, family)	26.1%	22.0%
	Networking (business associates)	15.1%	11.0%
	Internet	35.0%	26.8%
	Headhunter/employment agency	5.5%	5.3%
	NYIT Career Services/Career Net	1.7%	3.9%
	Career fair/on-campus recruiting	1.3%	2.6%
	Residency match	0.7%	15.2%
	Internship	7.6%	6.7%
	Other	5.0%	5.3%
Total		100.0%	100.0%

	Manhattan (n=279)	Old Westbury (n=465)
My major coursework at NYIT relates to my current field of employment [Mean response; 1 = Strongly disagree, 5 = Strongly agree]	2.92	3.50

		Manhattan (n=205)	Old Westbury (n=364)
While studying at NYIT did you participate in any form of experiential learning (internship/externship/field work/practicum/student teaching/clerkship)?	Yes	49.3%	48.6%
	No	50.7%	51.4%
Total		100.0%	100.0%

**Table 3: Employers of NYIT Graduates**

Region	Company	Count
United States	20/20 Inspections	1
	ABC Television	1
	ABS International Inc.	1
	Accenture	1
	Accounting Solutions of New York Inc.	1
	Acme Smoked Fish Corp.	1
	Acuty LLC	1
	Adorama	1
	AECOM	2
	Aflac	1
	Ahava	1
	Albany Medical Center	2
	All Nations Apostolic Tabernacle	1
	Allied Universal	1
	Altice USA	2
	Amazon	1
	Applet systems llc	1
	Arhient	1
	Assembly	1
	ASW Consultants LLC	1
	AT&T	2
	Atlantic engineering laboratories	1
	Avnil LLC	1
	AXA	1
	Bank of America	2
	Baruch College	1
	Bayonne Medical Center	1
	BBS architects and engineers	1
	BCBS	1
	BD	2
	Bi Labs	1
	Book and Puppet Co	1
	Breather Products Inc.	1
	Bricolage Designs	1
	Brookdale Hospital	1
	Brookhaven Memorial Hospital Medical Center	2
	Brooklyn Sports Club	1
	Brooksource (The Home Depot)	1
	Cambay Consulting LLC	1
	Canon	1
	Carestream	1
Catholic Health Services	2	
Centers Plan for Healthy Living	1	
Charter School of Educational Excellence	1	

Region	Company	Count
	China-U.S. Chamber of Commerce	1
	Christiana Care Health System	1
	Citi Bank	1
	Citrix	1
	CITY Guoan New Bridge Film Production Base	1
	City Of Chesapeake	1
	CitySpade	1
	Client Software Services	1
	Columbia University	1
	Comus fze	1
	Con Edison	2
	Concentra Urgent Care	1
	Concessi Engineering, P.C.	1
	Coney Island Hospital	1
	Consilio,LLC	1
	Constantine Engineering Inc.	1
	ConsultADD Inc	1
	Core Education and Technologies	1
	Cornwall Central School District	1
	Crain Communications	1
	Creative Designs by Sofia	1
	Crown castle	1
	Crozier Gedney	1
	CSS of NY,LLC	1
	CTI	1
	Dar Al-Tatweer, Architectural Consultants & Urban Development Office	1
	Dashride	1
	Dataminr, Inc	1
	DDB Health	1
	Dell Technologies	1
	Deloitte	1
	Denco Energy Management	1
	Department of Construction and Design	1
	DNA Controlled Inspections	1
	DRV Architect, P.C.	1
	Eagle Rock Management llc	1
	E-Giants	2
	Elite Studio E	1
	EMSL	1
	EN-POWER Group	1
	Ensis Technologies	1
	Essex County College	1
	ESV Digital	1
	Etq Inc	1
	Eureka Infotech Inc	1
	Evans and Paul LLC	1



Region	Company	Count
	ExxonMobil	1
	Eyeview	1
	Facorne Technologies	1
	Fairfield Medical Center	1
	Fiat Chrysler Automobiles	1
	First Recovery Group	1
	Fisec Global Inc.	1
	Fitch Ratings	1
	Fitt Consulting Group	1
	Flexible Systems	1
	Florida Union Free School District (S. S. Seward Institute)	1
	FMG	1
	Frank G. Relf Architect / Beth Donner Design	2
	Freeport High School	1
	GAIG	1
	Gannu Software Inc.	1
	Garden City Hotel	1
	GE Digital	1
	Generation Ready	1
	Gensler	1
	Glencove Rehab	1
	Graf and Lewent Architects	1
	Grand Strand Medical Center	1
	Great Logics Inc	1
	Guangxi Arts University, China	1
	H2M	1
	Hahnemann Hospital	1
	Harlem RBI (DBA DREAM)	1
	Harnett Health System	1
	Hartford Hospital	1
	Health & Welfare Council of Long Island	1
	Hemet Valley Medical Center	1
	Huafon	1
	Hyr Global Source	1
	IBM	2
	Ibsecad	1
	IDRIL	1
	Imam Muhammed Bin Saud Univerisity	1
	Industrial and Commercial Bank of China	1
	Inficare Technologies	1
	Infosys	1
	Input Creative Studio	1
	Integrated Control Corp.	1
	Intelsat	1
	Intercos	1
	Interplan LLC	1

Region	Company	Count
	Inxite Health Systems	1
	Island Trees Union Free School District	1
	Isolvers Inc.	1
	Jacobi Medical Center	1
	Jnit Technologies Inc.	1
	JP Morgan Chase	2
	Kaiser Permanente	1
	Keb America	1
	Kent Hospital	1
	KM Associates	1
	La Fabrique	1
	Larkin Community Hospital, Miami Florida	1
	LB Architects	1
	Lenox Hill	1
	Liberty Elementary School	1
	Logicworks	1
	Logisoft Technologies	1
	LTS	1
	Madison Hershey Heights	1
	Maimonides Medical Center	1
	Makovsky	1
	Malverne UFSD	1
	Mancini Architecture	1
	Manhattan Youth	1
	Margolin, Winer and Evans	1
	Marlabs Inc	1
	Massachusetts General Hospital	1
	Mast Global	1
	Mastercard	1
	Memorial Sloan Kettering Cancer Center	3
	Mercy Medical Center	3
	Merit Health Wesley	1
	MHA	1
	Microsoft	1
	Mill Max	1
	Minervini Vandermark Architecture	1
	Mobile City	1
	Molina Healthcare	1
	Montefiore Medical Center	1
	Moodys	1
	Morris Adjmi Architects	1
	Moulin & Association	1
	Mount Sinai Hospital	2
	MSU	1
	Multitek Systems & Design	1
	Nassau BOCES	1

Region	Company	Count
	Nassau Community College	2
	Nassau University Medical Center	2
	National Grid	1
	National Science Foundation	1
	National Securities	1
	National Taiwan University	1
	Neelam Construction Corp	1
	Neo Prism Solutions	1
	Netease	1
	Netrovert Software inc.	1
	Neutron Inc	1
	New York 1	1
	New York Institute of Technology	2
	New York Life Insurance	1
	New York Presbyterian Hospital	3
	Nextsource New York	1
	Niagara Falls Memorial Medical Center	1
	Nixsol Inc	1
	NJ Transit	1
	Nordstrom	1
	Northern Wasco County PUD	1
	Northwell Health	11
	NYC Department of Education	5
	NYP Lawrence	1
	NYU	1
	NYU Winthrop Hospital	1
	Oneil Langan architects	1
	Orbit International Corp.	1
	ORMC	1
	PAGNY	1
	Peconic Bay Medical Xenter	1
	Peerless Brokerage	1
	Performax Physical Therapy	1
	Perfume Center of America, Ronkonkoma,NY	1
	Persistent Systems, LLC	1
	Pharmaceutical	1
	Piping Rock Health Products	1
	Plaza Construction	1
	Positive Beginnings Preschool	1
	Precision Technologies Corp	1
	Prime Arrow	1
	Professional Physical Therapy	1
	Prosoft technologies inc	1
	Prospect 33	1
	Prudent Financial	1
	PT Solutions	1

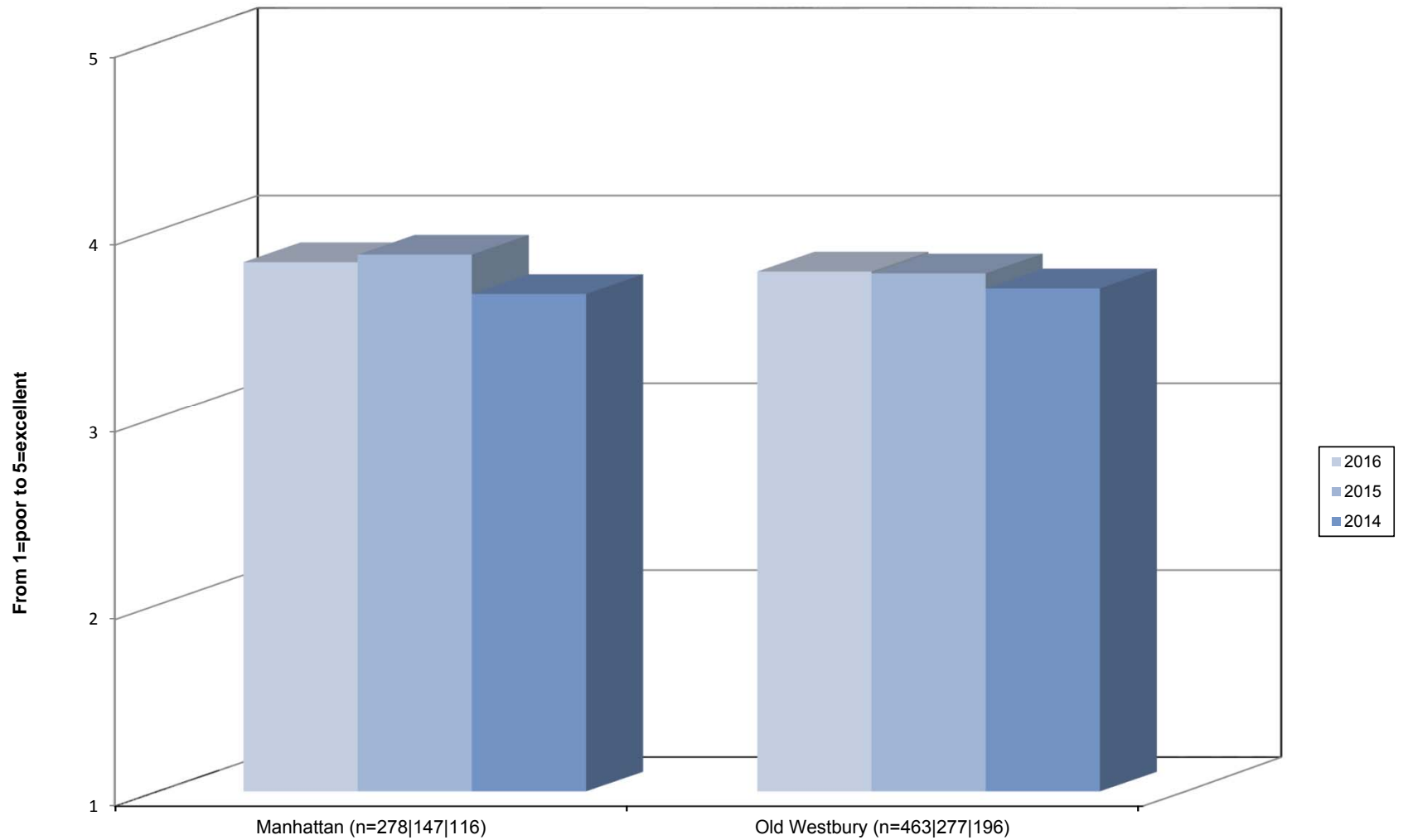
Region	Company	Count
	Qualitest	1
	Quantum Integrators Group LLC	1
	Ravz Inc	1
	Rensselaer Polytechnic Institute	1
	rePLACE Urban Studio	1
	Rhythm Media Group, Inc.	1
	Rochester Regional Health	1
	Ross Store Inc	1
	S&R IT inc	1
	Saint Claire Hospital Morehead, Kentucky	1
	salesforce.com	1
	Samsung Austin Semiconductor	1
	Sanford Health	1
	Satin Solutions LLC	1
	Savanna	1
	Schnider Electric	1
	Scribe America	1
	Self Employed	1
	SENAI	1
	Servicenow,CA	1
	SFH	1
	Showroomprive.com	1
	Social Security Institution of Turkey	1
	Softstandard solutions	1
	Southampton Hospital	1
	St. Elizabeth's Med. Center	1
	St. Joeseph Medical Center	1
	Startegic IT Experts	1
	State of Delaware	1
	State Street Bank & Trust	1
	Steven Winter Associates	1
	Stony Brook University	1
	Stony Brook University Hospital	2
	Success Academy	1
	Swanktek, Inc	1
	Swift Solutions	1
	TD Ameritrade	1
	TE Connectivity	1
	Techrode Inc	1
	TekGroup LLC	1
	TekSystems	1
	Telligen Tech Inc	1
	Tencent Company	1
	Tesla Energy	1
	Tetrasoft India Pvt Ltd	1
	The Boeing Company	1

Region	Company	Count
	The Dietz Partnership	1
	The Naiive	1
	The Wright Center	1
	Thomson Reuters Inc.	1
	Tianning Economic Development Zone Changzhou, Jiangsu	1
	TP ICAP plc	1
	TPG Architecture	2
	Trac Intermodal	1
	Tritech Communications	1
	Triveni IT	1
	UCONN	1
	Underwriter's Laboratory	1
	UNICC	1
	Unicon Pharma Inc	1
	University of Pennsylvania	1
	University of West Georgia	1
	Urgent Care	1
	URMC	1
	US Navy - Naval Medical Center Portsmouth	1
	Ussoft llc	1
	UTSW	1
	Valspar Corporation	1
	Vanderbilt University Medical Center	1
	Vdriveinfo, Inc	2
	Veracity Digital	1
	Virginia Mason Medical Center	1
	Vista Applied Solutions Group, Inc.	2
	Vormittag Associates Inc	1
	Voya	1
	Walter T. Gorman, P.E., P.C.	2
	Wantagh Union Free School District	1
	Weil, Gotshal & Manges LLP	1
	Weill Cornell Medicine	1
	Weir brothers contracting llc	1
	Westchester Medical center	2
	Western Queens Consultation Center	1
	WFC Architects	1
	White Plains Public Schools, NY	1
	Workwave	1
	World Wrestling Entertainment	1
	WRMC	1
	Wuhan douyu Network Technology Co., Ltd.	1
	Xiamen Airlines	1
	Xtreme Solutions LLC	1
	Zebra technology	1
	Zhengzhou Aochi in China	1

Region	Company	Count
	ZVST Cloud Technologies	1

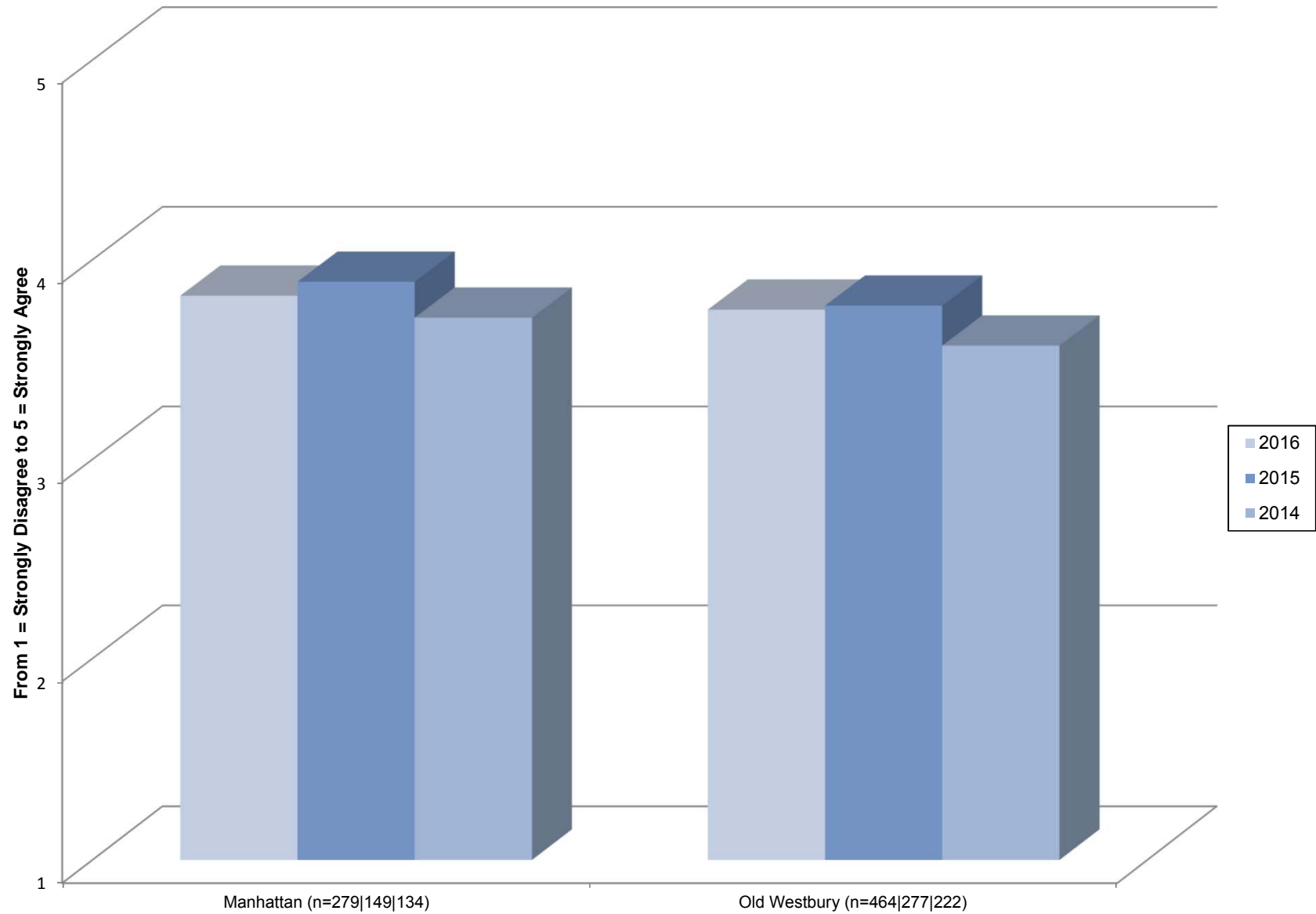
### **III. OVERALL EXPERIENCE AND NYIT RECOMMENDATION**

Figure 1: Comparison of "Overall, how would you describe your experience at NYIT?"  
2016, 2015, and 2014





**Figure 2: Comparison of "I would recommend NYIT to a friend" 2016, 2015, and 2014**



#### **IV. SUBSEQUENT PLANS**

**Table 4 : Subsequent Plans**

		Manhattan (n=257)	Old Westbury (n=415)
Which one statement best describes your education after graduating from NYIT?	Enroll in a college/univ. for graduate, professional, law, etc. classes	34.7%	39.3%
	Enroll in a college/univ. for undergraduate classes	5.5%	2.8%
	Enroll in continuing education classes	7.0%	7.5%
	Enroll in a technical school	0.7%	1.7%
	I was uncertain	40.0%	39.5%
	No educational plans	12.1%	9.2%
Total		100.0%	100.0%
		Manhattan (n=115)	Old Westbury (n=191)
How soon after graduating from NYIT did you enroll?	Was already enrolled before I graduated	20.0%	28.3%
	Immediately after graduation	22.6%	23.0%
	Within one year	27.8%	24.1%
	After one year	29.6%	24.6%
	Total	100.0%	100.0%
		Manhattan (n=110)	Old Westbury (n=184)
Type of school you enrolled in:	MBA	19.1%	6.5%
	Law school	0.0%	0.5%
	Medical school	1.8%	19.6%
	Dental school	0.0%	0.0%
	Engineering	31.8%	32.1%
	Theological school/seminary	0.0%	0.0%
	Education	4.6%	4.9%
	Graduate arts and sciences	20.0%	10.9%
	Other	22.7%	25.5%
Total		100.0%	100.0%
		Manhattan (n=104)	Old Westbury (n=157)
If you are planning to attend another college, which would you most like to attend (or are attending)?	NYIT	42.3%	51.0%
	Other	57.7%	49.0%
	Total	100.0%	100.0%
		Manhattan (n=232)	Old Westbury (n=366)
NYIT would like to stay in touch. Would you like to give us updated contact information?	Yes	59.9%	51.1%
	No	40.1%	48.9%
	Total	100.0%	100.0%

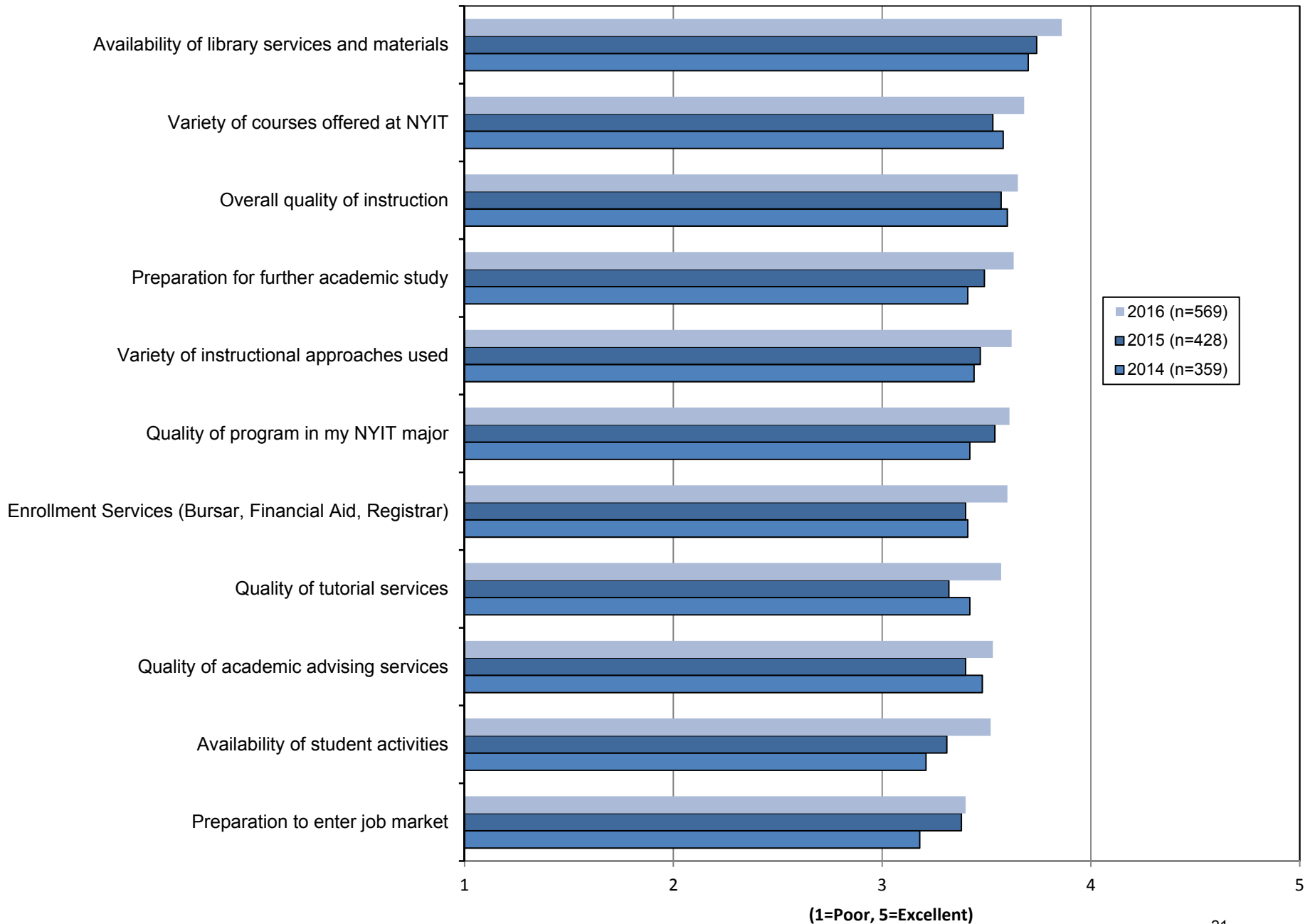
**Table 5: Colleges Graduates Would Most Like to Attend After NYIT**

Region	If you are planning to attend another college, which would you most like to attend?	Count
United States	Adelphi University	2
	Baruch College	1
	Boston University	1
	Bryan College	1
	Columbia University	5
	Community College	1
	Drexel	1
	Fordham	2
	Harvard	3
	Hofstra	1
	Hofstra Law	1
	ICC	1
	John Jay College of Criminal Justice	1
	Johns Hopkins	1
	McGill	1
	MIT	1
	Neoma Business School	1
	New York Fashion Institute	1
	No specific university; would consider NYIT if PhD programs are available in Energy and Renewables related fields.	1
	NYU	6
	Online university	1
	Pace	1
	Rochester	1
	Saint Louis University (already enrolled)	1
	Saint Peter's University	1
	School of Visual Arts	2
	Somewhere in Europe	1
	St. John's	1
	Stony Brook University	4
	SUNY	1
	SUNY Downstate	1
	SUNY Old Westbury	1
	Syracuse University	1
	Tufts University	1
	UCLA	1
	University of Miami	1
	University of New South Wales, Australia	1
	University of Toronto	1
	University of Valencia	1
	USC	1
Virginia Tech	1	
Washington University in St. Louis	1	
Wharton, University of Pennsylvania	1	
Would be NYIT if they had a masters of architecture program	1	

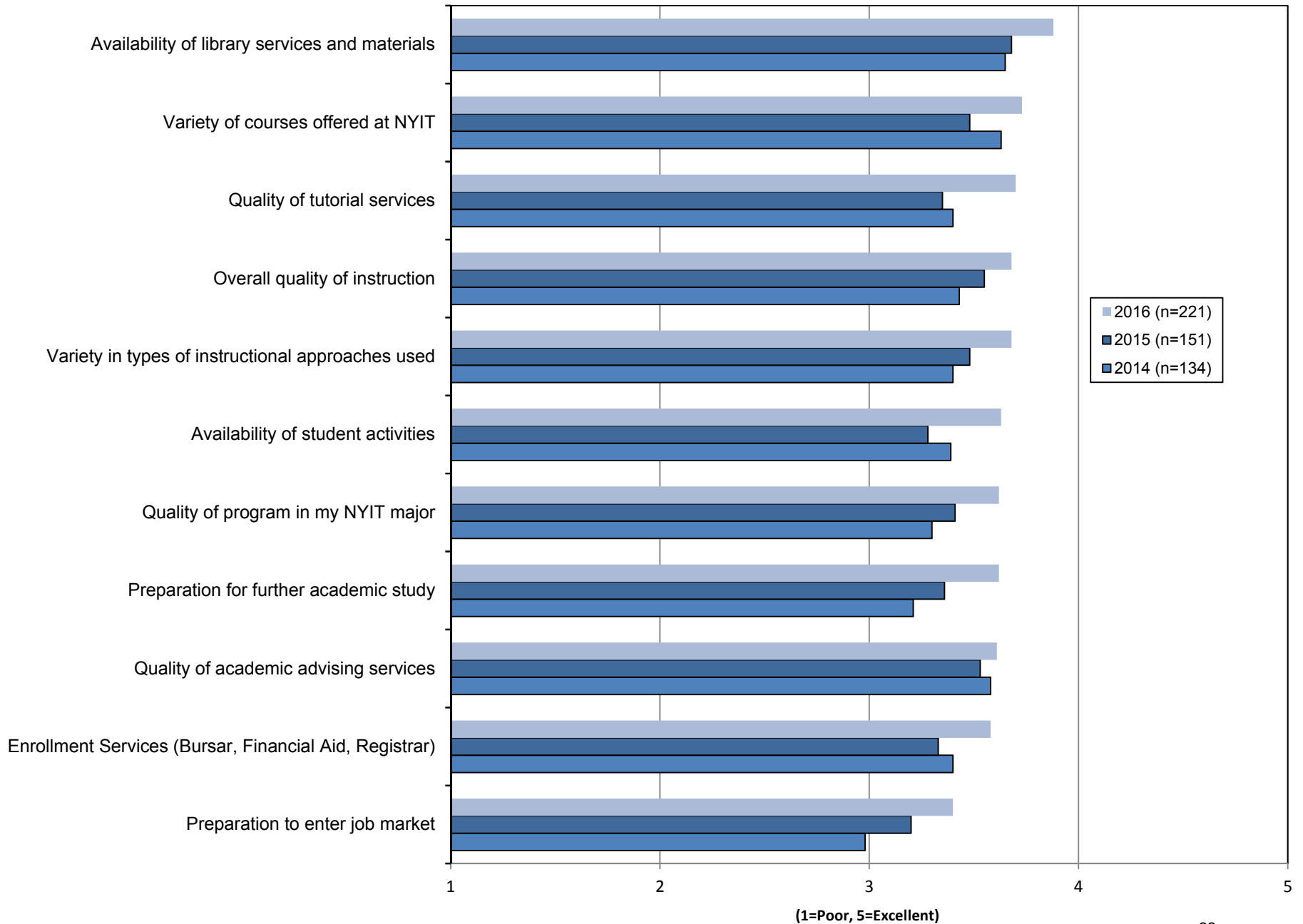
Region	If you are planning to attend another college, which would you most like to attend?	Count
	Zhe Jiang University	1

## **V. STUDENT SATISFACTION RATINGS**

**Figure 3: Comparison of Graduating Student Satisfaction Scores by Item for 2016, 2015 & 2014  
College Overall (United States)**

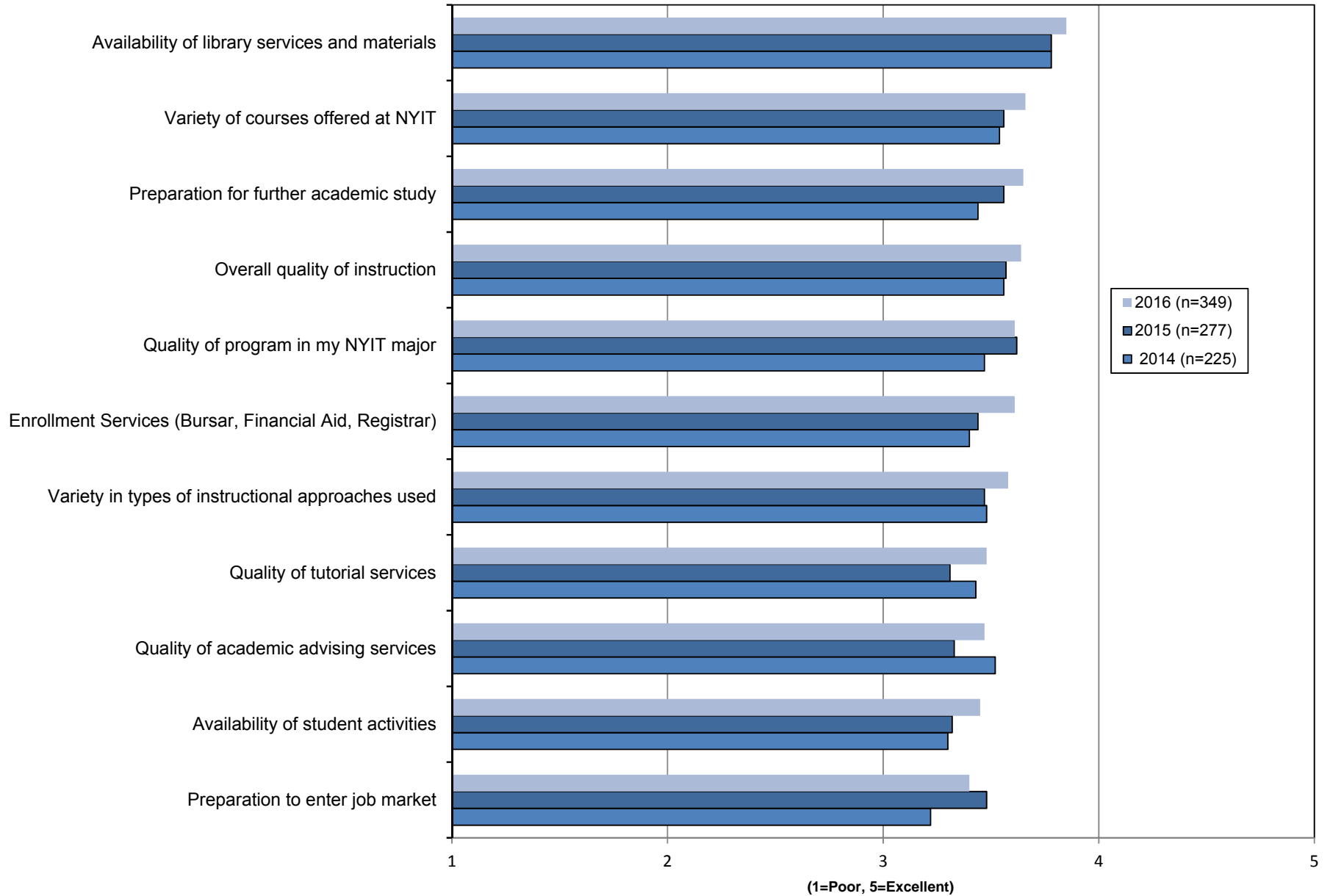


**Figure 4: Comparison of Graduating Student Satisfaction Scores by Item for 2016, 2015 & 2014  
Manhattan Campus**

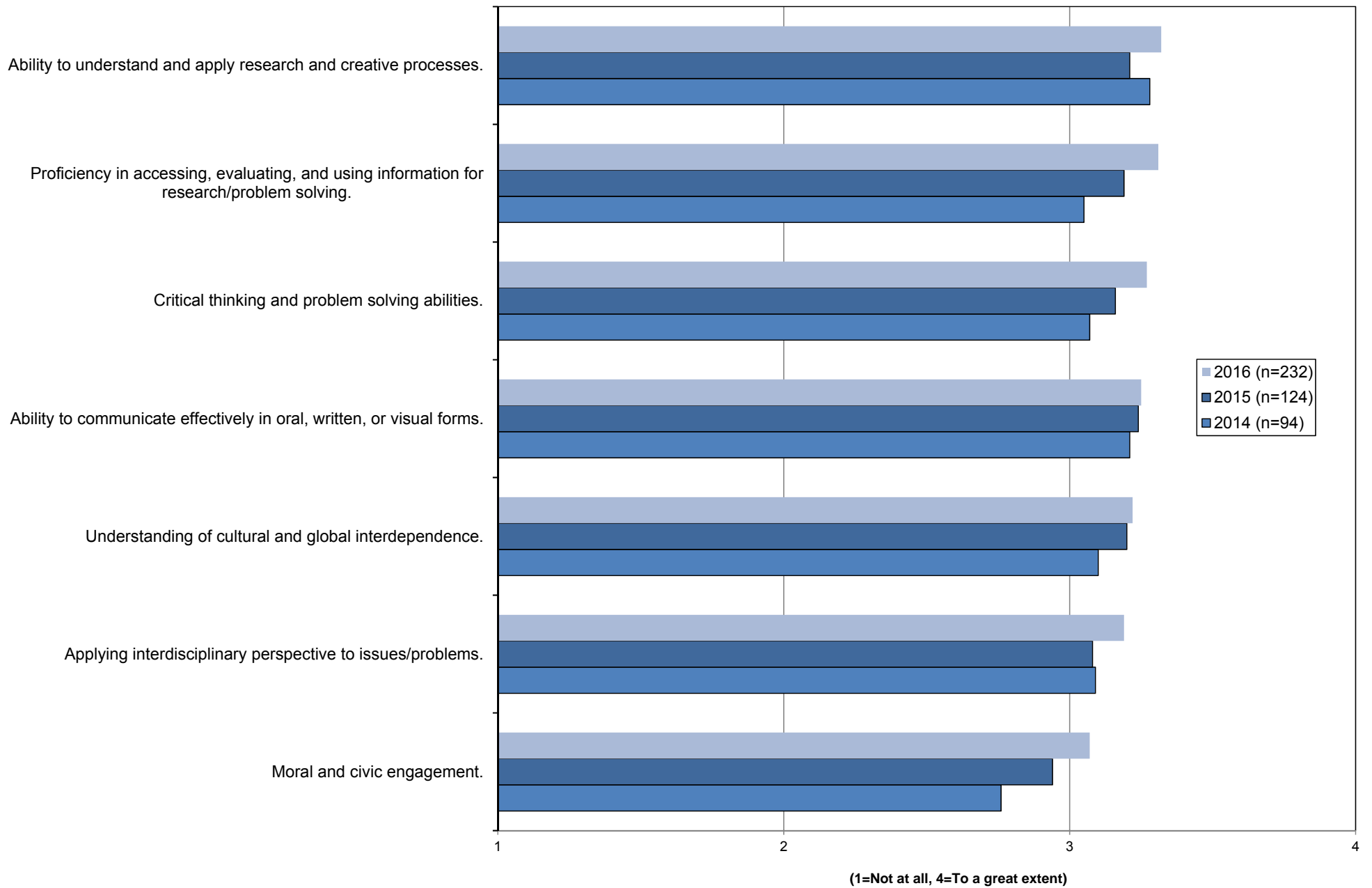




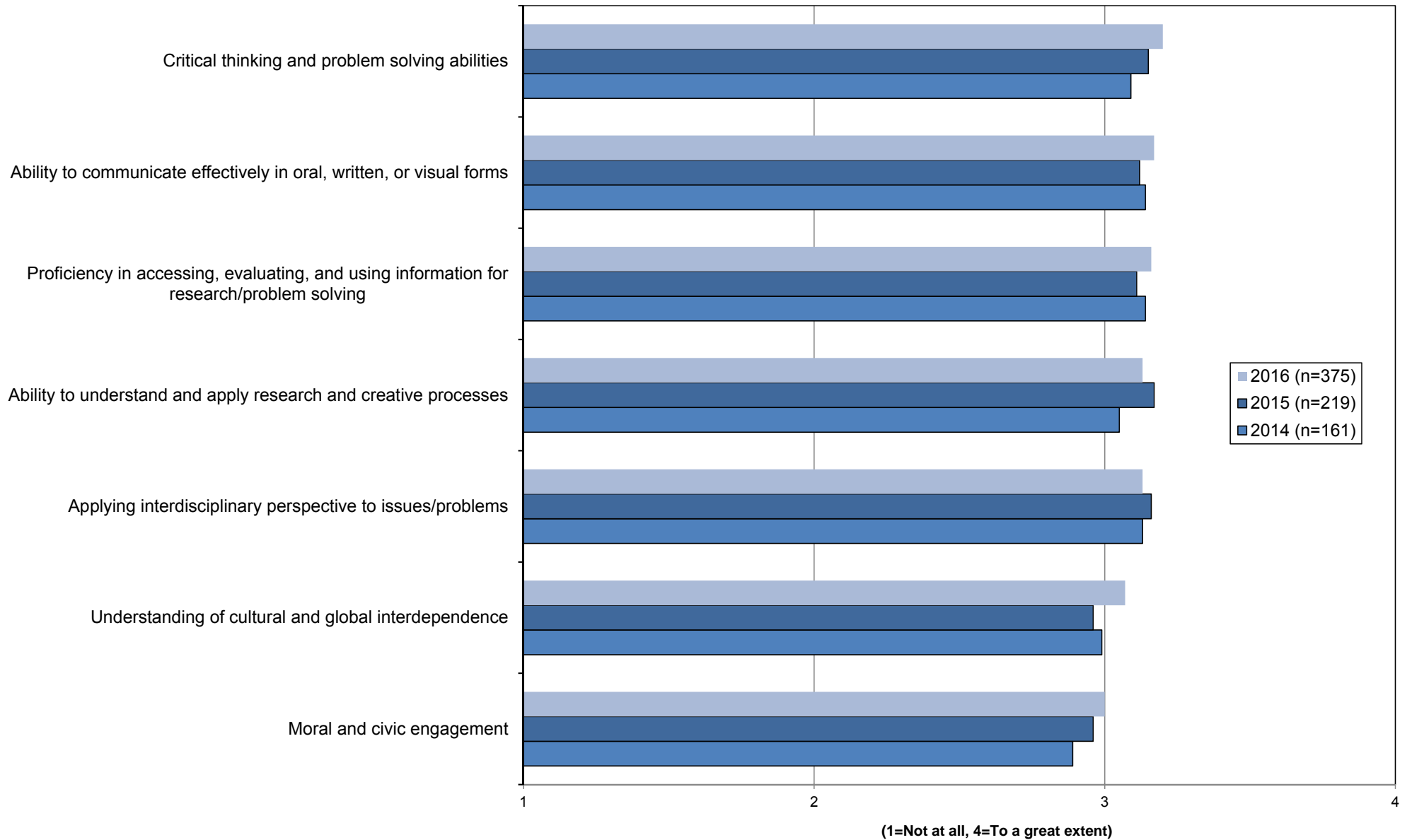
**Figure 5: Comparison of Graduating Student Satisfaction Scores by Item for 2016, 2015, & 2014 Old Westbury Campus**



**Figure 6: "How has your NYIT education improved you in the following areas" by Item for 2016, 2015, & 2014  
Manhattan**



**Figure 7: "How has your NYIT education improved you in the following areas" by Item for 2016, 2015, & 2014 Old Westbury**



## **VI. DEMOGRAPHICS**

**Table 6 : Demographics**

		Manhattan (n=204)	Old Westbury (n=340)
Ethnicity	Black or African American	11.8%	9.4%
	Hispanic	3.9%	4.7%
	Asian	61.7%	50.0%
	American Indian/Alaska Native	0.5%	0.0%
	Native Hawaiian/Pacific Islander	0.0%	0.0%
	White	22.1%	35.9%
Total		100.0%	100.0%
		Manhattan (n=279)	Old Westbury (n=465)
Citizenship status	Non-resident alien	60.9%	36.8%
	U.S. citizen	39.1%	63.2%
	Total	100.0%	100.0%
		Manhattan (n=279)	Old Westbury (n=465)
Gender	Female	43.0%	40.6%
	Male	57.0%	59.4%
	Total	100.0%	100.0%
		Manhattan (n=195)	Old Westbury (n=361)
Estimated annual income	Under \$15,000	11.3%	3.9%
	\$15,000 - \$25,000	9.7%	4.2%
	\$25,001 - \$35,000	7.2%	4.2%
	\$35,001 - \$45,000	14.8%	8.6%
	\$45,001 - \$60,000	20.0%	34.8%
	\$60,001 - \$80,000	22.1%	28.5%
	\$80,001 - \$100,000	6.7%	12.5%
	\$100,001 or over	8.2%	3.3%
Total		100.0%	100.0%